

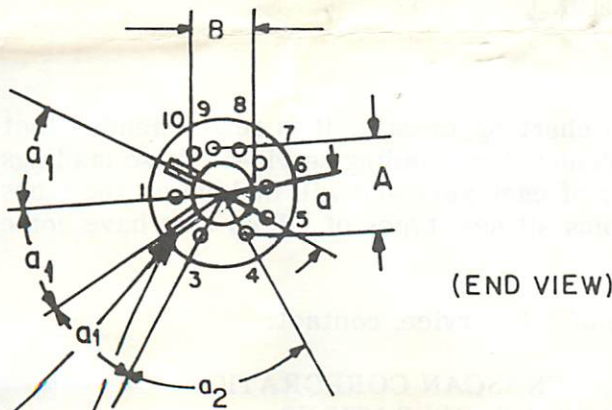
~~1100025~~

CRT ADAPTER

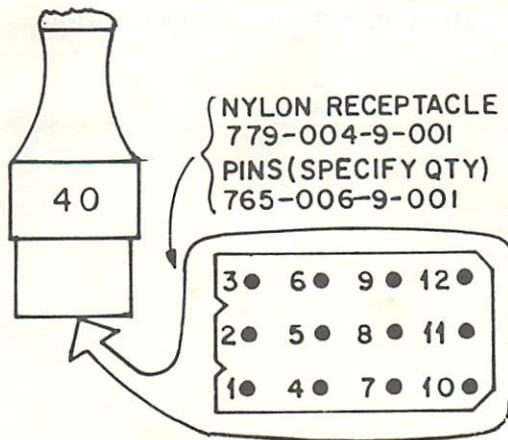
BK PRECISION

CR-40

SOCKET (LESS WIRES) — 749-112-9-001



DIMENSIONS C & D
TYPICAL FOR BOTH
KEYWAYS



WIRING SCHEME

CRT SOCKET PIN	WIRE COLOR	NYLON RECEPTACLE
1	WHT	12
2	keyway	—
3	N.C.	—
4	BLU	9
5	ORG	6
6	YEL	7
7	RED	3
8	BLK	1
9	BRN	2
10	GRN	8
11	keyway	—

FITS CRT DIMENSIONS:

- A = pin circle diameter = 12.00 mm/0.472" nom.
- a = angular pin spacing (pins 4 - 10) = 32°
- a1 = angular keyway spacing = 30.5°
- a2 = angular pin spacing (pins 3 & 4) = 46°
- B = post diameter = 7.5 mm/0.295" nom.
- C = keyway width = 1.2 mm/0.047" nom.
- D = keyway depth = 4.2 mm/0.165" nom.

BK PRECISION DYNASCAN CORPORATION

FACTORY SERVICE OPERATIONS
6460 West Cortland Street
Chicago, Illinois 60635
(312)889-8870
Telex # 25-3475

Used with B & K-Precision Models: 467, 470

TUBE TYPE	HEATER VOLTAGE
330ADB22	6.3
330WB22	6.3
A20JKU10X	4.5

In order to keep your set-up chart up-to-date, it is recommended that you subscribe to the B & K-Precision chart mailing service. These mailings will occur in May and November of each year and will include all the tubes presently listed on your chart plus all new types of CRT's that have come out since the last mailing.

If you wish to take advantage of this service, contact:

B & K-PRECISION, DYNASCAN CORPORATION
FACTORY SERVICE OPERATIONS
6460 West Cortland Street
Chicago, Illinois 60635
Telephone #: (312) 889-8870
Telex #: 25-3475

For information on ordering a subscription.

BK PRECISION DYNASCAN
CORPORATION

6460 West Cortland Street
Chicago, Illinois 60635