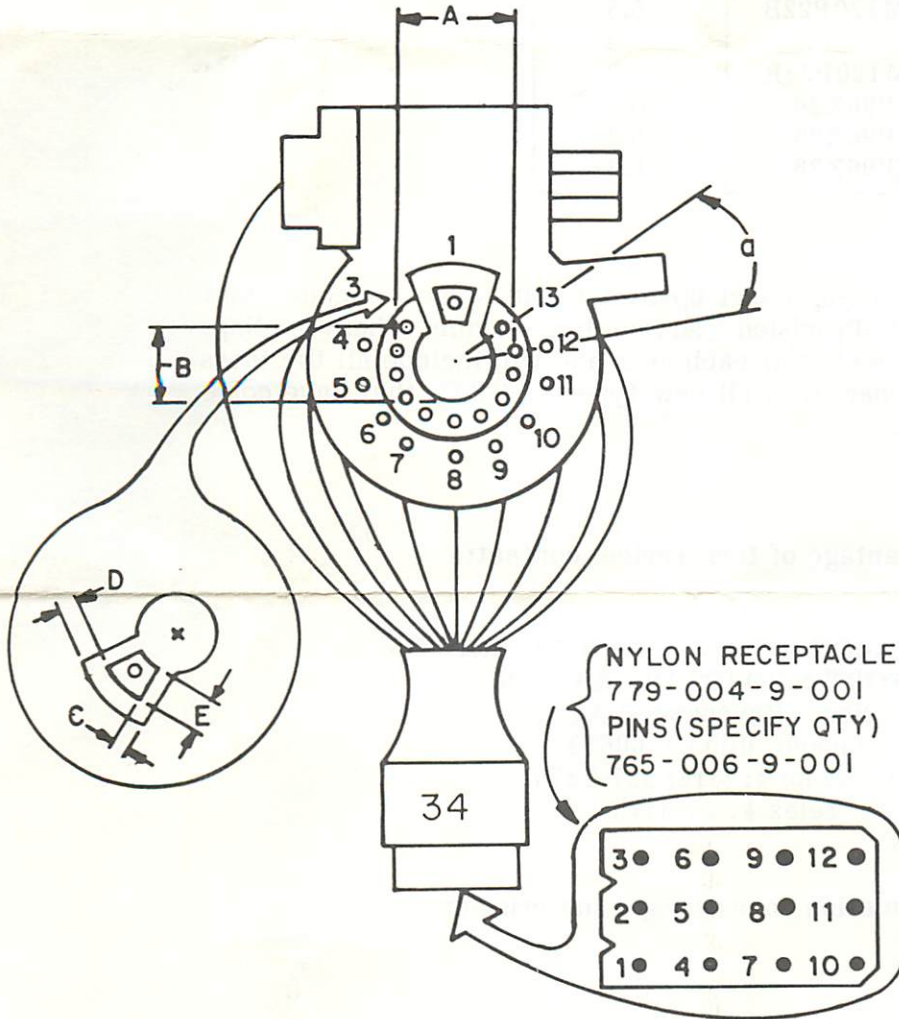


CRT ADAPTER

BK PRECISION

CR-34

ASSEMBLY WITH WIRES — 527-087-9-001



NOTE: NO CONTACTS AT PIN POSITIONS 3 AND 13.

WIRING SCHEME

CRT SOCKET PIN	WIRE COLOR	NYLON RECEPTACLE
1	BLK	12
2	keyway	---
3	---	---
4	YEL/BLU	N.C.
5	YEL/GRN	N.C.
6	GRN	1
7	YEL/RED	2
8	RED	6
9	WHT	N.C.
10	BRN	10
11	BLUE	4
12	WHT/RED	N.C.
13	---	---
14	keyway	---

FITS CRT DIMENSIONS:

A = pin circle diameter	= 15.24 mm/0.600" nom.
a = angular pin spacing	= 25-5/7°
B = post diameter	= 11.0 mm/0.433" max.
C = keyway width	= 1.52 mm/0.060" nom.
D = keyway width	= 1.27 mm/0.050" nom.
E = keyway depth	= 5.59 mm/0.220" min.

BK PRECISION DYNASCAN CORPORATION

FACTORY SERVICE OPERATIONS
4050 N. Ravenswood Ave.
Chicago, Illinois 60613
(312) 327-7270
Telex # 25-3475

Used with B & K-Precision Models: 467, 470

TUBE TYPE	HEATER VOLTAGE
C5M120P22B	6.3
C5M120P22G	6.3
C5M120P22R	6.3
EP96X24	6.3
EP96X25	6.3
EP96X26	6.3

In order to keep your set-up chart up-to-date, it is recommended that you subscribe to the B & K-Precision chart mailing service. These mailings will occur in May and November of each year and will include all the tubes presently listed on your chart plus all new types of CRT's that have come out since the last mailing.

If you wish to take advantage of this service, contact:

B & K-PRECISION, DYNASCAN CORPORATION
FACTORY SERVICE OPERATIONS
 4050 North Ravenswood Avenue
 Chicago, Illinois 60613
 Telephone #: (312) 327-7270
 Telex #: 25-3475

For information on ordering a subscription.

BK PRECISION **DYNASCAN**
CORPORATION

6460 West Cortland Street
 Chicago, Illinois 60635